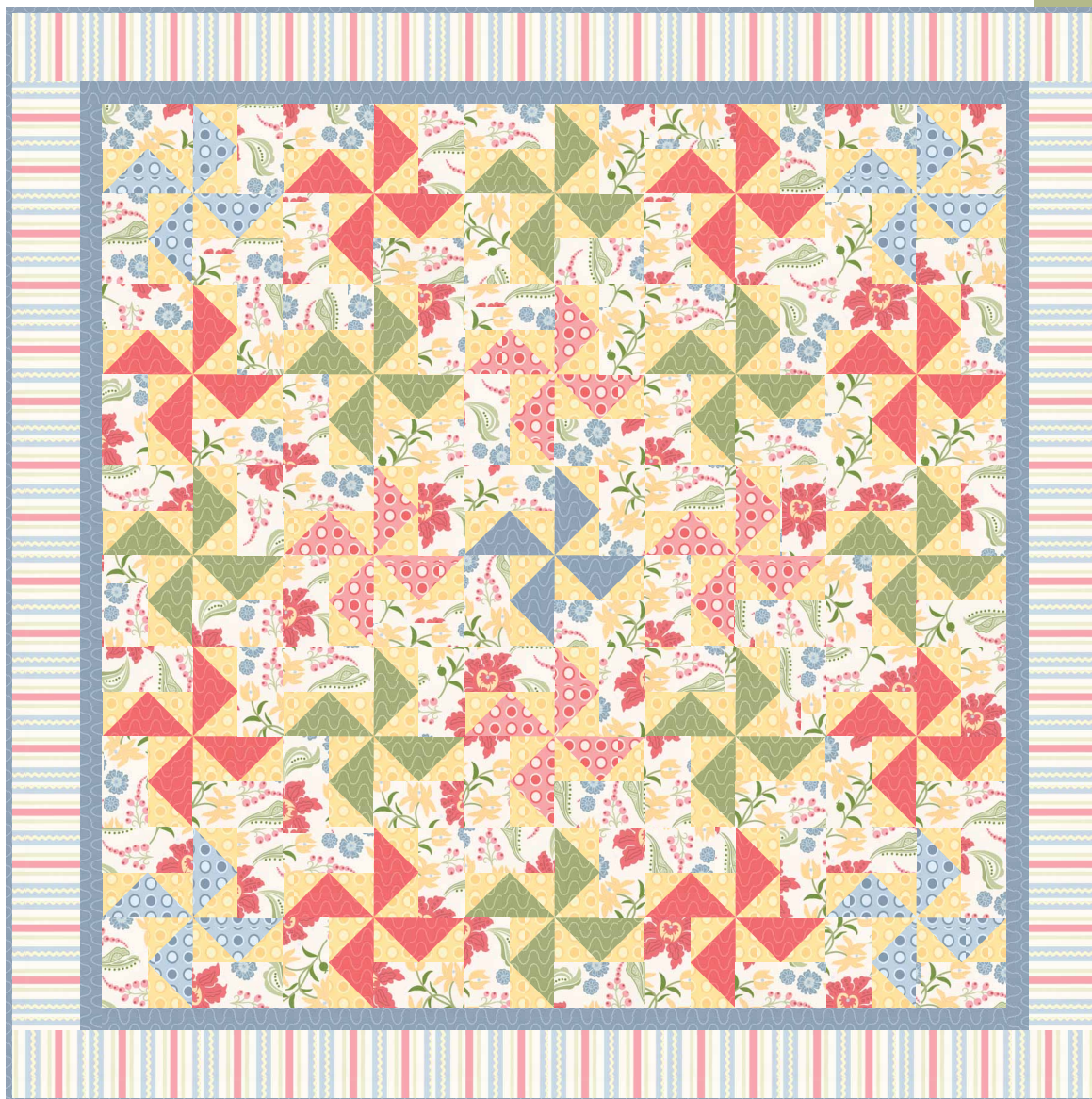


Farmgirl's Garden



pattern tested

Quilt Featuring fabrics from the **Farmgirl's Garden** collection by **Joined at the Hip**

Finished size: 48" x 48"

Design by Avis Shirer for Clothworks

 **Clothworks**TM
Inspired. Inspiring.

www.clothworkstextiles.com info@clothworkstextiles.com

Materials

Yardages based on 42" wide *unwashed* fabric. Prewashing fabric may require additional yardage.

1 yd	Yellow Dot (Y0640-9)
1/4 yd	Blue Dot (Y0640-30)
1/4 yd	Coral Dot (Y0640-39)
5/8 yd	Multi Stripe (Y0641-2)
3/8 yd	Green Tonal (Y0642-24)
3/4 yd	Blue Tonal (Y0642-30)
3/8 yd	Coral Tonal (Y0642-40)
1 yd	Cream Floral (Y0643-2)
3 yds	Backing of choice

Cut the Fabrics

WOF = Width of Fabric
LOF = Length of Fabric

From Yellow Dot cut:

200 – 2-1/2" squares

From Blue Dot cut:

16 – 2-1/2" x 4-1/2" rectangles

From Coral Dot cut:

16 – 2-1/2" x 4-1/2" rectangles

From Multi Stripe cut:

5 – 3-1/2" x WOF strips (outer border)

From Green Tonal cut:

32 – 2-1/2" x 4-1/2" rectangles

From Blue Tonal cut:

4 – 2-1/2" x 4-1/2" rectangles
5 – 2-1/2" x WOF strips (binding)
4 – 1-1/2" x WOF strips (inner border)

From Coral Tonal cut:

32 – 2-1/2" x 4-1/2" rectangles

From Cream Floral cut:

100 – 2-1/2" x 4-1/2" rectangles

Directions

Prior to starting this project, please check our web site for any updates: www.clothworkstextiles.com.

Piece the Blocks:

1. Lightly pencil a diagonal line on the reverse side of all 2-1/2" Yellow Dot squares.
2. Lay a Yellow Dot square (b) on top of a Blue Dot rectangle (a) as shown in Fig 1. Stitch diagonally across the yellow square as shown. Trim as indicated and turn the resulting triangle over the seam and press. Repeat with another yellow square (b) as shown. Repeat to make sixteen flying geese units total with the Blue Dot rectangles.
3. Repeat Step 2 with Coral Tonal, Green Tonal, Coral Dot and Blue Tonal rectangles to make a total of 100 flying geese units (including those from Step 2).
4. Sew a Cream Floral rectangle (c) to the top of each flying geese unit (Fig 2).
5. For each block you will use four flying geese units of the same color. Sew the units together as shown (Fig 3) into an 8-1/2" block (8" finished block size) and press. Make a total of twenty five pinwheel blocks (eight Coral Tonal, eight Green Tonal, four Blue Dot, four Coral Dot and one Blue Tonal).

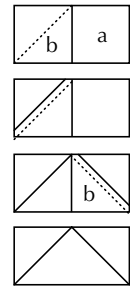


Figure 1

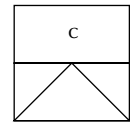


Figure 2

Assembly and Borders:

1. Set the pinwheel blocks together in five rows of five blocks each following color photo.
2. For the inner border measure the height of the quilt through the center and trim two 1-1/2" strips from the Blue Tonal fabric to that measurement. Sew them to the left and right sides of the quilt. Press outward. Measure the width of the quilt top through the center and trim two 1-1/2" strips from the Blue Tonal fabric to that measurement. Sew them to the top and bottom sides of the quilt; press outward.
3. Repeat Step 2 with 3-1/2" x WOF strips of Multi Stripe, first piecing the strips end to end and pressing; then proceed as above.
4. Quilt as desired and bind using 2-1/2" strips of Blue Tonal fabric.

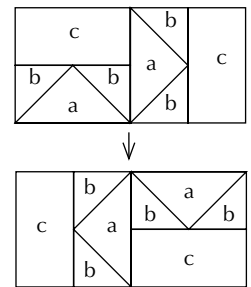


Figure 3