

# Air Mail 1930's



Fabric by Karen Roti  
Pattern Design by Anita Peluso 50" x 63"

[www.clothworks.com](http://www.clothworks.com)    [info@clothworks.com](mailto:info@clothworks.com)

## Materials

Yardages based on 42" wide fabric

- 1 Yd - Cream Sprig (Y1130-2)
- 1 1/4 Yds - Dk. Blue Moire (Y1031-31)  
(Includes binding)
- 1/4 Yd - Cream Stripe (Y1100-2)
- 1/4 Yd - Lt. Brown Stripe (Y1100-14)
- 1 Yd - Lt. Blue Stripe (Y1100-29)
- 1/4 Yd - Multi Stamps (Y1101-2)
- 1/4 Yd - Red Stamps (Y1102-4)
- 1/4 Yd - Brown Stamps (Y1102-15)
- 1/4 Yd - Blue Stamps (Y1102-30)
- 1/4 Yd - Cream Canceled (Y1103-2)
- 1/4 Yd - Lt. Brown Canceled (Y1103-14)
- 1/4 Yd - Lt. Blue Canceled (Y1103-29)
- 3 3/8 Yds backing of your choice

## Cut the Fabrics

WOF = Width of Fabric  
LOF = Length of Fabric

### From the Cream Sprig cut:

31 - 3 1/2" x 10 1/2" rectangles

### From the Blue Moire cut:

20 - 3 1/2" squares

160 - 2" squares

6 - 2 1/2" WOF strips (binding)

### From the Cream Stripe cut:

2 - 2 1/2" WOF strips

### From the Brown Stripe cut:

2 - 2 1/2" WOF strips

### From the Blue Stripe cut:

6 - 4 1/2" x WOF strips; cut into:

18 - 4 1/2" x 3 1/2" rectangles

14 - 4 1/2" x 10 1/2" rectangles

4 - 4 1/2" squares

2 - 2 1/2" WOF strips

### From the Multi Stamps cut:

2 - 2 1/2" WOF strips

### From the Red Stamps cut:

2 - 2 1/2" WOF strips

### From the Brown Stamps cut:

2 - 2 1/2" WOF strips

### From the Blue Stamps cut:

2 - 2 1/2" WOF strips

### From the Cream Canceled cut:

2 - 2 1/2" WOF strips

### From the Brown Canceled cut:

2 - 2 1/2" WOF strips

### From the Blue Canceled cut:

2 - 2 1/2" WOF strips

Prior to starting this project, please check our web site for any updates to this pattern: [www.clothworkstextiles.com](http://www.clothworkstextiles.com)

## Directions

### Postage Stamp Blocks - Finished Size 10 1/2" square

1. Cut each of the Air Mail Stripe, Postage Stamp & Canceled Stamp 2 1/2" WOF strips in half to create 40 - 2 1/2" x 22" strps.
2. Arrange the strips into 8 piles of 5 WOF strips each, changing the order of the fabrics in each pile so that each one is different. Sew the 5 WOF strips together in each pile to create 8 different strip sets. Press all the seams going the same direction.
3. Cut 8 - 2 1/2" strips from each strip set for a total of 64 strips (you will only use 60).
4. Select 5 strips and flip every other one to make the seams in each row point in opposite directions. Sew together to create postage stamp block. (Diagram 1)
5. Make a total of 12 postage stamp blocks.



Diagram 1

### Star Sashing

1. With a pencil, mark the diagonal on the wrong side of each Blue Moire 2" square.
2. With right sides together, sew a Blue Moire 2" square to one corner of a Cream Sprig 3 1/2" x 10 1/2" rectangle following the diagonal pencil line.
3. Trim away the corner leaving a 1/4" seam allowance. (Diagram 2)
4. Continue Steps 2 & 3 in each corner of the Cream Sprig 3 1/2" x 10 1/2" rectangle until all 4 corners have been done. Make 31 Star Sashing pieces.

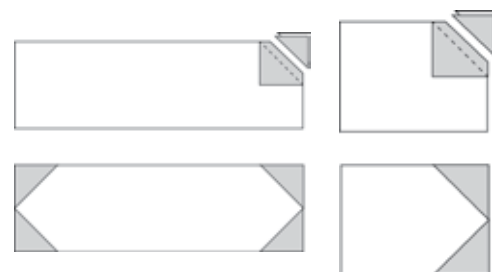
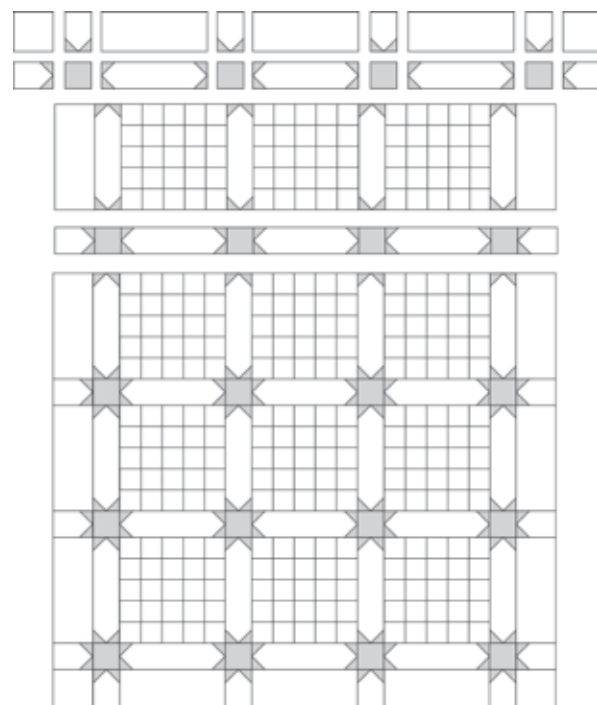


Diagram 2

Diagram 3

### Stripe Border

1. With right sides together, sew a Blue Moire 2" square to o



While every attempt has been made to give accurate measurements, yardage requirements, and construction directions, this does not allow for personal variations in measuring, cutting and/or sewing. Clothworks is not responsible for printing errors.